
Greater Wellington Water

April 2007

Water Supply

April 2007

Water Supply

Review of operations for the period ended 30 April 2007

1. Items of note

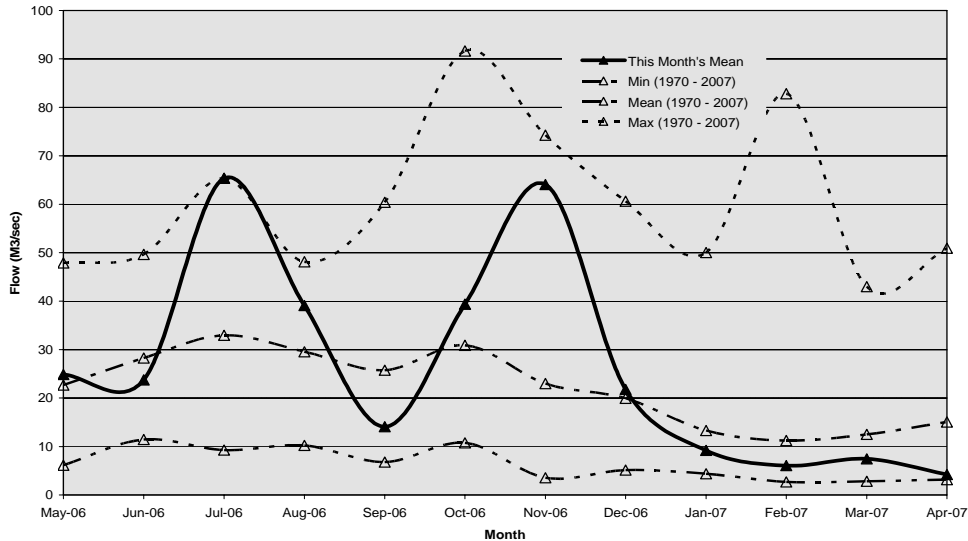
- Two Tenders were received for the provision of laboratory services. The Tenders were assessed and a preferred Tenderer identified. A letter of acceptance will be issued to the preferred Tenderer once staff and equipment issues have been resolved.

2. Supply situation

There were no supply issues for the period.

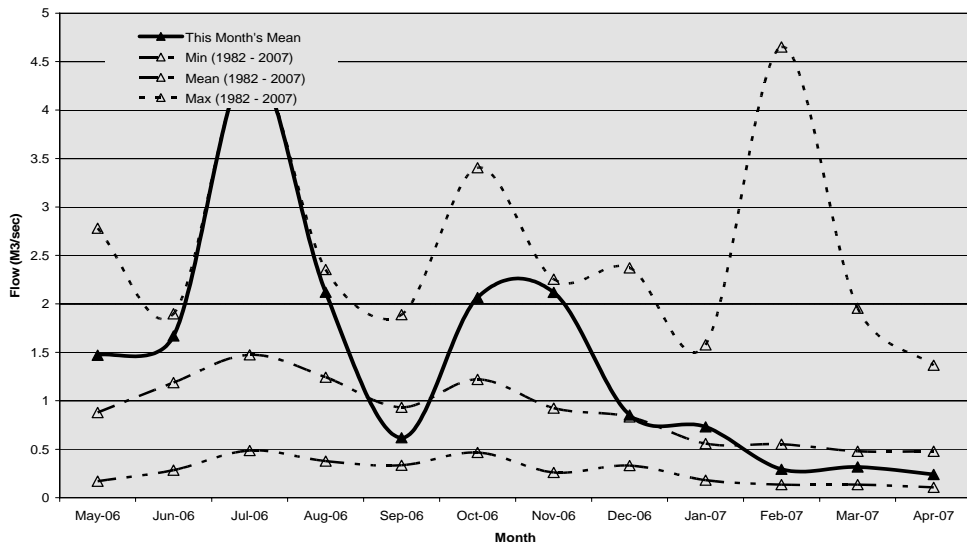
Hutt River flows

The monthly flow in the Hutt River for April was near minimum.



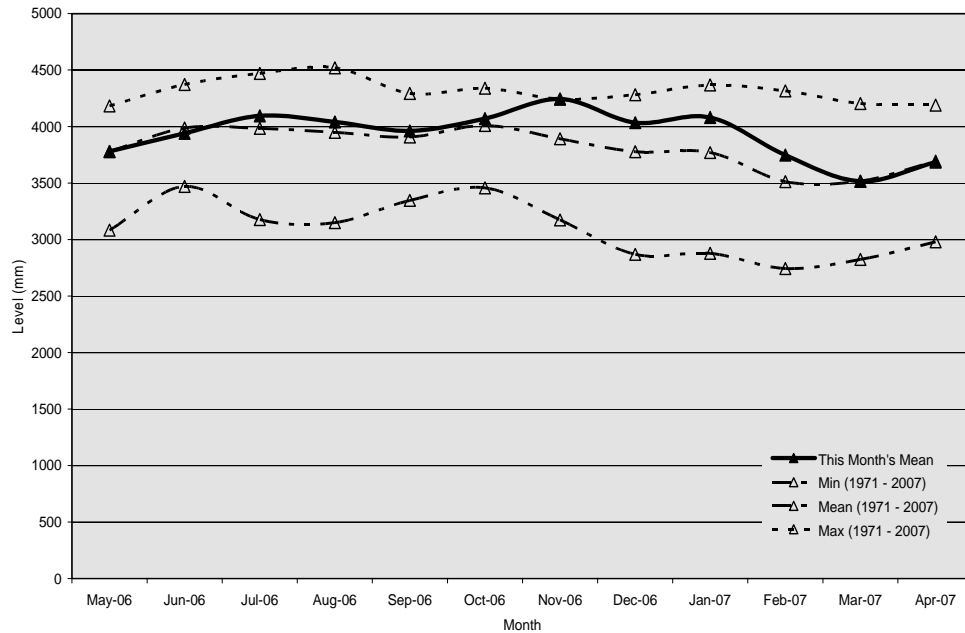
Wainuiomata River flows

The monthly flow in the Wainuiomata River in April was below average.



Aquifer levels

The water level in the Waiwhetu aquifer in April was average.



3. Treatment plants

3.1 Te Marua

3.1.1 Quality

- There were two Improvement Opportunity Forms (IOF) during the period for low fluoride and low treated water pH. There were no transgressions during the period.

3.1.2 Health and safety

- There were no accidents or incidents during the period.

3.1.3 Environmental

- There were two transgressions during the period. During remote manual testing of the Kaitoke abstraction valves the flow over the weir dropped below 600 litres/second for two minutes. This testing was discussed with Environmental Regulation prior to being completed.
- The second transgression because recent low river levels resulted in abstraction control operating very close to and occasionally slightly below the consent minimum (1 mm to 2 mm). This condition falls within the accuracy range stated in the resource consent conditions.

3.1.4 Operations and maintenance

- The treated water reservoir curtain has been inspected following questions raised during tracer flow testing. The curtain was found to be in perfect condition.

3.2 Wainuiomata

3.2.1 Quality

- There were no IOFs during the period.

3.2.2 Health and safety

- There were no accidents or incidents during the period.
- Confined space safety and firefighting training courses were held on-site by Fire Emergency Training Services.

3.2.3 Environmental

- There were no chemical spills or accidental discharges during the period.

3.2.4 Operations and maintenance

- The new Orongorongo repeater site construction has been completed and the repeater is now on-line.
- The reaction tank was drained, so the rapid mix chambers could be evaluated prior to changes in the way they are operated.
- The Contract for the Sinclair Creek culvert construction has now been completed.
- Work has begun at Morton Dam to replace rip-rap and repair gabions.

3.3 Waterloo and Gear Island Water Treatment Plants

3.3.1 Quality

- There were no IOFs or transgressions during the period.

3.3.2 Health and safety

- There were no accidents or incidents for the period.

3.3.3 Environmental

- There were no chemical spills or accidental discharges during the period.

3.3.4 Operations and maintenance

- Dual stream operational research and investigations continued during the period.

4. Distribution

4.1 Health and safety

- There were no accidents or incidents during the period. A staff member has been on accident compensation because of a non-work related injury.

4.2 Environmental

- Pipeline repair work at Randwick has been placed on hold until a groundwater abstraction consent can be issued.

4.3 Operations and maintenance

- The Point Howard branch was shut down and the new tie-in pipework installed.
- The new access for the Randwick valve chamber was boxed and poured, and the aluminium lid installed.
- Work on the Waterloo valve replacements project continued, with bolts being renewed on access manholes in Knights Road, single air valves renewed in Knights Road, Willoughby Street and on the Penrose variable speed drive, and the fire hydrants renewed in Willoughby Street and on the Penrose fixed branch. Work is now approximately 90 percent.
- The fabrication of the pipe specials for the Tunnel Grove valve chamber continued.
- The renewal, housing and reinstatement of scour valves were completed for the Judgeford and Porirua scours.
- The work on the Wainuiomata Lower Dam scours continued.
- The branch and bypass valves on the 525 mm supply to Point Howard were renewed.
- The external coating on the Sar Street branch line was repaired.

4.4 Pipeline leaks

- There was one leak during the period:
 - The 900 mm pipeline at the Judgeford valve chamber was excavated to locate a leak. A section of steel plate was welded over the leak and the coating repaired.

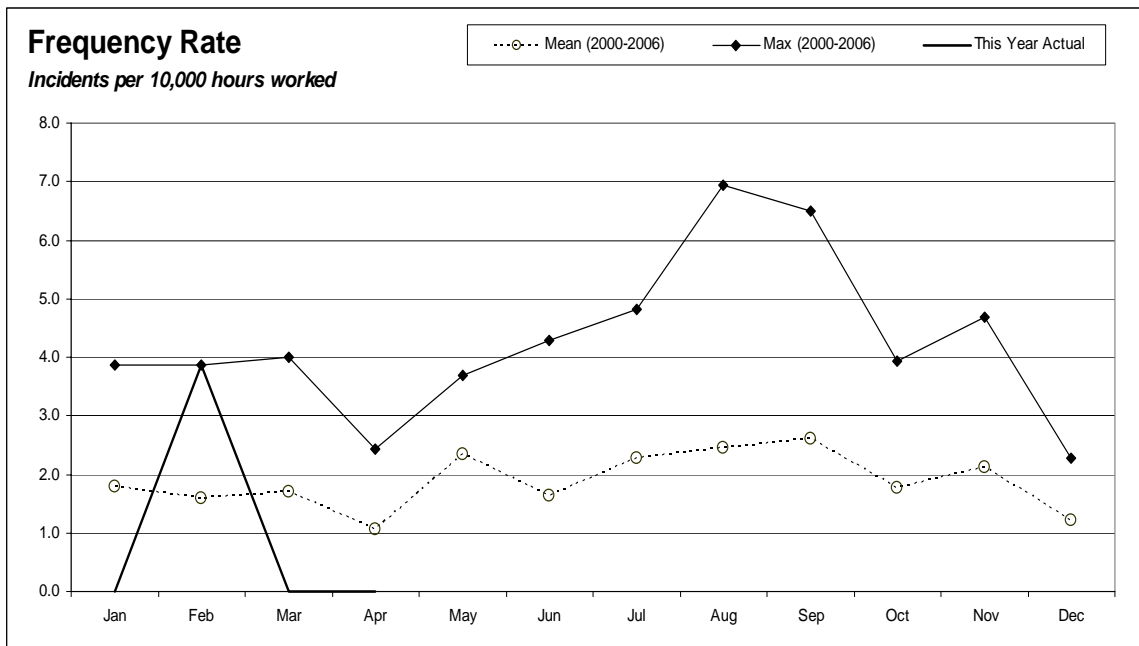
Water Supply and Forestry Health and Safety Data from July 2006 - Total Injuries

	Jul	Aug	Sep	Oct	Nov	Dec	Jan	Feb	Mar	Apr	May	Jun	
PRODUCTION (+ 4 OPS ADMIN)													
Hours worked	2473	2495	2535	2444	3399	2473	1650	2363	2620	2386			Sep - Slipped off pipe
Employee numbers	16	16	15	15	15	15	17	17	17	17			Feb - Strained back / bruised head / sprained shoulder and lower back
Incidents	0	0	1	0	0	0	0	3	0	0			
Days lost	0	0	0	0	0	0	0	3	0	0			
Incidence rate (number of incidents per 100 workers)	0	0	7	0	0	0	0	18	0	0			
Frequency rate (incidents per 10,000 hours exposure)	0	0	4	0	0	0	0	13	0	0			
Severity rate (days lost to injury per 10,000 hours worked)	0	0	0	0	0	0	0	13	0	0			
DISTRIBUTION													
Hours worked	1423	1541	1573	1491	2034	1507	784	1356	1578	1336			Jul - Cut hand / Slipped and fell against ute
Employee numbers	10	10	10	10	10	10	11	11	11	11			Aug - Hit head on ute door
Incidents	2	1	0	0	0	0	0	0	0	0			
Days lost	0	0	0	0	0	0	0	0	0	0			
Incidence rate (number of incidents per 100 workers)	20	10	0	0	0	0	0	0	0	0			
Frequency rate (incidents per 10,000 hours exposure)	14	6	0	0	0	0	0	0	0	0			
Severity rate (days lost to injury per 10,000 hours worked)	0	0	0	0	0	0	0	0	0	0			
ENGINEERING CONSULTANCY													
Hours worked	1531	1656	1652	1624	2521	1648	760	1320	1740	1428			Aug - Hit head on bookshelf
Employee numbers	10	12	12	12	12	12	12	12	12	12			
Incidents	0	1	0	0	0	0	0	0	0	0			
Days lost	0	0	0	0	0	0	0	0	0	0			
Incidence rate (number of incidents per 100 workers)	0	8	0	0	0	0	0	0	0	0			
Frequency rate (incidents per 10,000 hours exposure)	0	6	0	0	0	0	0	0	0	0			
Severity rate (days lost to injury per 10,000 hours worked)	0	0	0	0	0	0	0	0	0	0			
SUPPORT													
Hours worked	1035	1059	1122	1046	1572	1057	671	992	986	895			
Employee numbers	7	7	7	7	7	7	7	7	7	7			
Incidents	0	0	0	0	0	0	0	0	0	0			
Days lost	0	0	0	0	0	0	0	0	0	0			
Incidence rate (number of incidents per 100 workers)	0	0	0	0	0	0	0	0	0	0			
Frequency rate (incidents per 10,000 hours exposure)	0	0	0	0	0	0	0	0	0	0			
Severity rate (days lost to injury per 10,000 hours worked)	0	0	0	0	0	0	0	0	0	0			

LABORATORY	Jul	Aug	Sep	Oct	Nov0	Dec	Jan	Feb	Mar	Apr	May	Jun	Dec = Fell on gravel - cut knee
Hours worked	833	947	892	868	1350	813	592	716	761	785			
Employee numbers	7	6	6	6	6	6	6	6	6	6			
Incidents	0	0	0	0	0	1	0	0	0	0			
Days lost	0	0	0	0	0	0	0	0	0	0			
Incidence rate (number of incidents per 100 workers)	0	0	0	0	0	17	0	0	0	0			
Frequency rate (incidents per 10,000 hours exposure)	0	0	0	0	0	12	0	0	0	0			
Severity rate (days lost to injury per 10,000 hours worked)	0	0	0	0	0	0	0	0	0	0			
STRATEGY AND ASSET	Jul	Aug	Sep	Oct	Nov	Dec	Jan	Feb	Mar	Apr	May	Jun	
Hours worked	528	740	664	680	1140	792	304	652	732	672			
Employee numbers	5	5	5	5	5	5	5	5	5	5			
Incidents	0	0	0	0	0	0	0	0	0	0			
Days lost	0	0	0	0	0	0	0	0	0	0			
Incidence rate (number of incidents per 100 workers)	0	0	0	0	0	0	0	0	0	0			
Frequency rate (incidents per 10,000 hours exposure)	0	0	0	0	0	0	0	0	0	0			
Severity rate (days lost to injury per 10,000 hours worked)	0	0	0	0	0	0	0	0	0	0			
FORESTRY	Jul	Aug	Sep	Oct	Nov	Dec	Jan	Feb	Mar	Apr	May	Jun	Jul - Slipped and strained leg Jul - Tripped on vine and hurt knee and back
Hours worked	466	492	421	386	526	308	245	369	390	400			
Employee numbers	3	3	3	3	3	3	3	3	3	3			
Incidents	2	0	0	0	0	0	0	0	0	0			
Days lost	0	0	0	0	0	0	0	0	0	0			
Incidence rate (number of incidents per 100 workers)	67	0	0	0	0	0	0	0	0	0			
Frequency rate (incidents per 10,000 hours exposure)	43	0	0	0	0	0	0	0	0	0			
Severity rate (days lost to injury per 10,000 hours worked)	0	0	0	0	0	0	0	0	0	0			

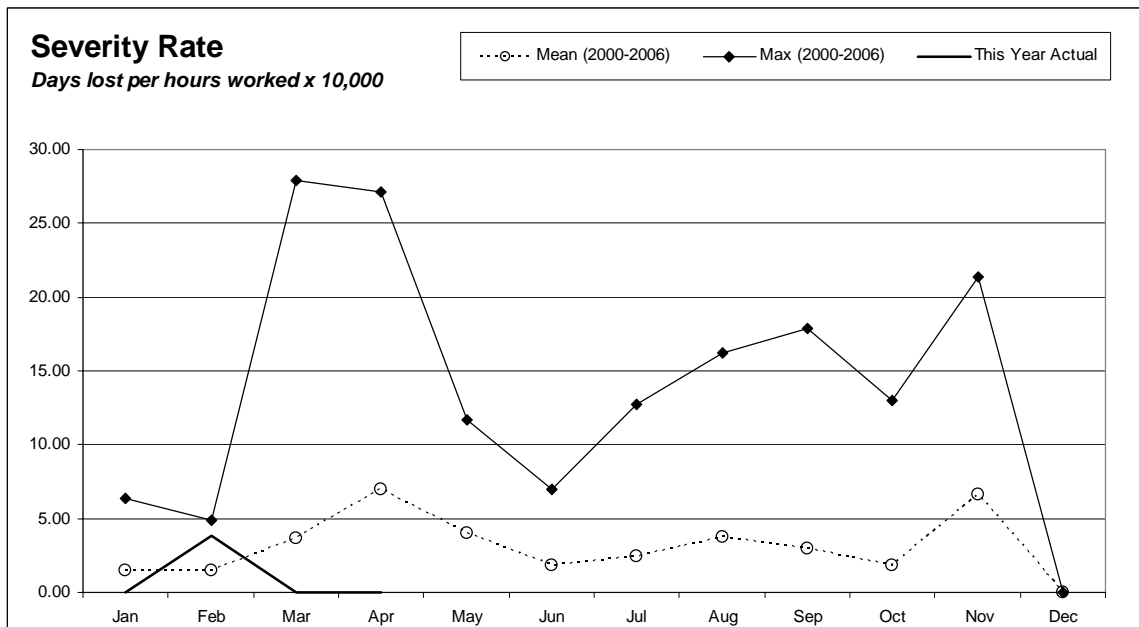
Water Supply and Forestry Combined	Jul	Aug	Sep	Oct	Nov	Dec	Jan	Feb	Mar	Apr	May	Jun
Hours worked	8288	8929	8858	85380	12541	8597	5005	7767	8806	7901		
Employee numbers	58	59	58	0	58	58	61	61	61	61		
Injuries	4	2	1	0	0	1	0	3	0	0		
Days lost	0	0	0	0	0	0	0	3	0	0		
Frequency rate (incidents per 10,000 hours exposure)	5	2	1	0	0	0	0	4	0	0		
Severity rate (days lost to injury per 10,000 hours worked)	0	0	0	0	0	0	0	4	0	0		

Incidence rate = (number of incidents/number of employees) x 100
Frequency rate = (number of incidents/person hours worked) x 10,000
Severity rate = (days lost/person hours worked) x 10,000



Incidents

No incidents during the period



Lost days

0

Engineering Services

April 2007

Engineering Services

Review of operations for the period ended 30 April 2007

1. Asset management

- The capital work budget for 2006/7 is \$6.23 million. The 31 March forecast expenditure to 30 June is \$3.892 million. However, \$437,000 is to be carried forward into 2007/8 to fund projects that are not expected to be completed in the financial year.
- Key projects and their status are as follows:
 - Improvements to the Wainuiomata Lower Dam spillway have been completed. Arrangements are now being made to seal the scour pipes to allow the reservoir to fill to its new reduced level.
 - Richardson Drilling Company Ltd is making good progress on the installation of three monitoring wells on the Petone Foreshore. The well at McEwan Park is installed and the deep well near Petone Wharf is nearly at full depth. The wells will monitor water level and conductivity to check for saltwater intrusion.
 - Preparatory work for the replacement of the control system at the Te Marua Water Treatment Plant, including equipment purchase and logic planning, is proceeding. The new system will be installed next financial year.
 - Construction of a portable powdered activated carbon plant to combat taste and odour problems is close to completion.
 - Registrations of interest have been called for the installation of the effluent pipe from the Wainuiomata Water Treatment Plant centrifuge to the Wainuiomata sewer in Hine Road. A resource consent has been obtained for the crossing of the Wainuiomata River.
 - The installation of new modern electrical equipment in the Thorndon Pumping Station is complete.
 - The Mechanical Trade Services Contractor has been engaged to install the filter to waste pipe at Wainuiomata Water Treatment Plant. The stainless steel pipe and fittings have been ordered and fabrication work has commenced.
 - New quality monitoring equipment has been installed at Thorndon, Karori and Pukerua Bay, so the microbiological quality of the water in the distribution network can be monitored continuously. It will be tested during May and June before being used for compliance reporting to the Hutt Valley District Health Board (HVDHB).
 - Various improvements to the telemetry system are being made at the request of Wellington City Council (WCC) to facilitate its separation from the WCC telemetry system and free up channels for WCC use.

- A new control valve is being installed in the Tunnel Grove valve chamber.
 - A bypass pipeline for the Pukerua Bay Reservoir is programmed for installation in June 2007.
 - Randwick Pumping Station is being decommissioned. Pipework is being modified, a new access installed into the Randwick valve chamber and the old Point Howard pumps are being removed.
 - Arrangements are being made to install an actuator on the Silverstream line valve to improve seismic protection.
 - New pumps are being manufactured at the supplier's expense to replace the rejected Kelburn pumps (poor condition and vibration problems). The replacement pumps are expected in September 2007. KSB Ajax Pumps (NZ) Ltd is also investigating the pump vibration issue. The old Kelburn pumpsets are continuing to supply water in the interim. The existing Karori Pumping Station will be decommissioned on completion.
- Construction of a new pumping station building at Grenada being funded by WCC is largely complete but installation of the power supply and commissioning have been delayed. Construction of a new reservoir above Grenada to be supplied by the pumping station has been delayed but a rising main to it is partially constructed. Since Greater Wellington Regional Council (GWRC) will take over ownership of the pumping station and the rising main on completion, the standard of the work is being carefully monitored.

2. New sources

- Stage 2 studies of the potential to take water from the Upper Hutt aquifer are progressing. A successful well has been completed in Ward Street and a second begun on the corner of Ward and MacLean Streets. At least four wells will be drilled and then flow tested.
- Phase 2 studies of possible water storage dams are progressing well. Draft reports on environmental, ecological, heritage, botanic, geologic, hydrologic, engineering, and planning issues have been received. More detailed costing estimates are being prepared.
- Investigations and discussions are continuing with stakeholders on how best to evaluate the low flow requirements in the Hutt River, with a view to reducing the minimum residual flow at Kaitoke to allow more water to be abstracted in low flow conditions. Fish passage surveys in the upper reaches of the river have been completed, a preliminary assessment of algae issues made, and a survey of macroinvertebrates conducted. Possible changes to the *Regional Freshwater Plan* are being investigated to facilitate the taking of more water whilst providing greater assurance that ecological values will be safeguarded.

3. Quality assurance

- Our records indicate that compliance with the new *Drinking-Water Standards for New Zealand 2005* is being achieved at all four water treatment plants.
- A “B” grading has been received for the Waterloo Water Treatment Plant. This is the maximum grading the plant can achieve because (at the request of Hutt City Council (HCC) the water leaving Waterloo is not chlorinated. HCC understands the level of risk this represents.

We are assembling information for HVDHB staff members to enable the grading of the bulk distribution system. This has not been graded in the past. Information to enable the grading of Gear Island is also being collected. It is expected that the previous B grading can be lifted to A1.

- The *Health (Drinking Water) Amendment Bill* is being considered by the Health Select Committee. Further discussions have been held between Ministry of Health officials and Local Government New Zealand at the request of the Select Committee. Four meetings with senior territorial authority staff members and local body politicians were held in April, and the outcome of these has been discussed with the Ministry of Health. There are no significant implications for GWRC.

4. Environmental

- Lowering of the Wainuiomata Lower Dam spillway has been completed but delays over the issuing of a resource consent have prevented closing of the scour valves, which will create a wetland behind the dam.
- Power factor correction equipment has been installed at the Gear Island and Wainuiomata Water Treatment Plants and the Ngauranga Pumping Station. This equipment will improve electrical efficiency and reduce energy use. A similar installation is planned for Waterloo Water Treatment Plant next financial year.
- Good progress is being made on drilling three sentinel wells along the Petone Foreshore. They will be equipped with instruments that will provide an early warning of saline intrusion into the Waiwhetu aquifer. This work is being undertaken jointly with the Environmental Monitoring Section and Investigations Department, and will reduce the risk of contamination of the aquifer.
- A minor contravention of the Resource Management Act was notified by the Environmental Regulation Department in March. Pumping from a trench excavation at Randwick is construed as being a water “take” and the flow allowed by the permitted use rules was exceeded. A resource consent has now been issued and the work resumed.

5. Catchment management

- Weed control spraying along the access road has been completed by the ranger.
- We have taken advantage of having Juno Civil Ltd on-site for the Wainuiomata Lower Dam project to reset the rip-rap below the Morton Dam and to repair the failed gabion baskets downstream from the dam.
- The roar hunt was completed without incident, with 3 deer, 4 pigs and 2 goats culled.
- Twenty-two hunter days were spent by the commercial cullers in the Hutt Catchment for a tally of 12 goats, 2 pigs and 1 deer. The low numbers demonstrate the value of this method of animal control.
- Two Orongorongo and one Wainuiomata walking tours were held in March. Patronage was 14, 13 and 54 respectively. One walker had to be brought out of the Orongorongo Valley by train after injuring a knee.
- The usual levels of vandalism and trespass occurred, with one more serious incident where a gate and part of the catchment fence on the Moores Valley ridge was damaged as trespassers sought to gain entry by ramming the gate and fence with a vehicle. A replacement gate has been installed and the damaged gate is being repaired and strengthened.

Marketing and Design

April 2007

Marketing and Design

Review of operations for the period ended 30 April 2007

1. Items of note

- Draft Wellington Water Management Plan. Steps to complete the Technical Report of the proposed water management plan were presented and discussed with customers on 27 April. WCC agreed to co-ordinating a consensus view on behalf of the customers. A brief for research to identify behaviour and attitudes about water use and conservation issues and the level of ownership of water efficient products was drafted. This requires further development and customer consultation. The research is intended to strengthen the Technical Report and provide insight to public support for various aspects of demand management. A draft report on Wellington domestic water meter consumption was reviewed for Capacity and returned with comments and questions.
- Water Supply Service Level Agreement. Several clauses of the agreement were redrafted to reflect customer feedback received via Capacity during March. Upper Hutt City Council was approached directly to discuss and agree remedies to several specific concerns they had. This was achieved.
- Summer Water Conservation Campaign. A summary of advertising activity and water use relative to recent past years was presented to the customers. The winner of our irrigation prize draw competition was visited with Total Irrigation (providing system design and supply) for a photo opportunity and to assess the winner's needs. A prize acceptance agreement was drafted with Ian Cooper from Total Irrigation. A piece on the prizewinner was written for the *Be the Difference* e-newsletter and another arranged for the GWRC web site.
- Water History Update. Images were received from Alexander Turnbull Library. Captions were reviewed to incorporate Alexander Turnbull Library credit requirements. Images, plus text and layout changes were returned to designers for updating the document draft.
- WCC Water Bylaw Review. A submission was written regarding WCC's proposed changes to its water supply bylaws and the introduction of a customer water charter.
- Media. One media release was arranged to announce the winner of our Summer Water Conservation Campaign irrigation system prize draw. Media Skills training completed.
- There were seven plant tours during March, involving some 144 visitors. There were no plant tours during April.

2. **Water usage**

Water consumption for the metering year (April 2006 to March 2007) was 56,739 million litres, 0.5 percent lower than the 2005/6 metering year. Supply for the 2006/7 year was inflated by a substantial leak in Wellington between April and August. However, this was offset by lower water use during spring and early summer. We believe the same leak also inflated the supply totals for February and March 2006, affecting the 2005/6 year.

We supplied 4,500 million litres of water in April, averaging 150 million litres per day. This is within the normal range for April. It was the fifth highest April supply total in the last 10 years. Graphs detailing the sales volume information are on page 19.

3. ***Be the Difference* and water usage**

Following the Utility Services Committee meeting, officers were asked to summarise the background of and lessons learnt from the *Be the Difference* campaign regarding water usage

3.1 **Be the Difference**

Be the Difference was established as a minimum three year campaign to implement the “social marketing” (behaviour change) aspect of the 2003 to 2006 communications strategy.

Intended to take a long-term approach, albeit with interim targets, *Be the Difference* would be based on market research and complement other GWRC campaigns, including water conservation. A quantitative benchmark survey was conducted in March 2004 amongst Wellington residents. This was followed up by qualitative (focus groups) and quantitative surveys of *Be the Difference* members in August/September 2005. Some findings of interest were:

- Some members saw themselves as “passive recipients” of information. Other felt encouraged to change their behaviour.
- Main barriers to change are perceived lack of time or the hassle involved.
- Over half of regional Wellingtonians are “greenies” or “environmental pragmatists” – can be persuaded to change habits.
- Quantity of water was a significant environmental concern (78 percent) for regional residents. Lower level of people doing anything about it (41 percent), although this had increased significantly from 2001 (24 percent).

To achieve success with *Be the Difference*, strong relationships were needed with city and district councils, Government Departments and agencies, e.g., in relation to recycling and water quality.

Be the Difference obtained significant additional media coverage from innovative advertising campaigns, leading to more awareness and greater “talkability”. The aim was to make the behaviour changing messages or “calls to action” more palatable.

3.2 Water conservation

GWRC has been running water conservation campaigns for at least 10 years, with the exception of summer 2004. Research to understand attitudes and water saving behaviours amongst various user groups has guided campaign development, notably in 1997, 2002 and 2003. From 2000 to 2002 the campaign featured a television commercial with Maggie Barry focused on gardeners, with the aim of reducing peak summer water usage. The creative was changed to an animated series in 2003.

There were several issues with the television advertising, including recall of the 2003 creative relative to the earlier “Maggie” advertisements, price inflation and lack of flexibility with scheduling. Since 2005 we have selected media with shorter cancellation periods to allow for variable summer weather conditions.

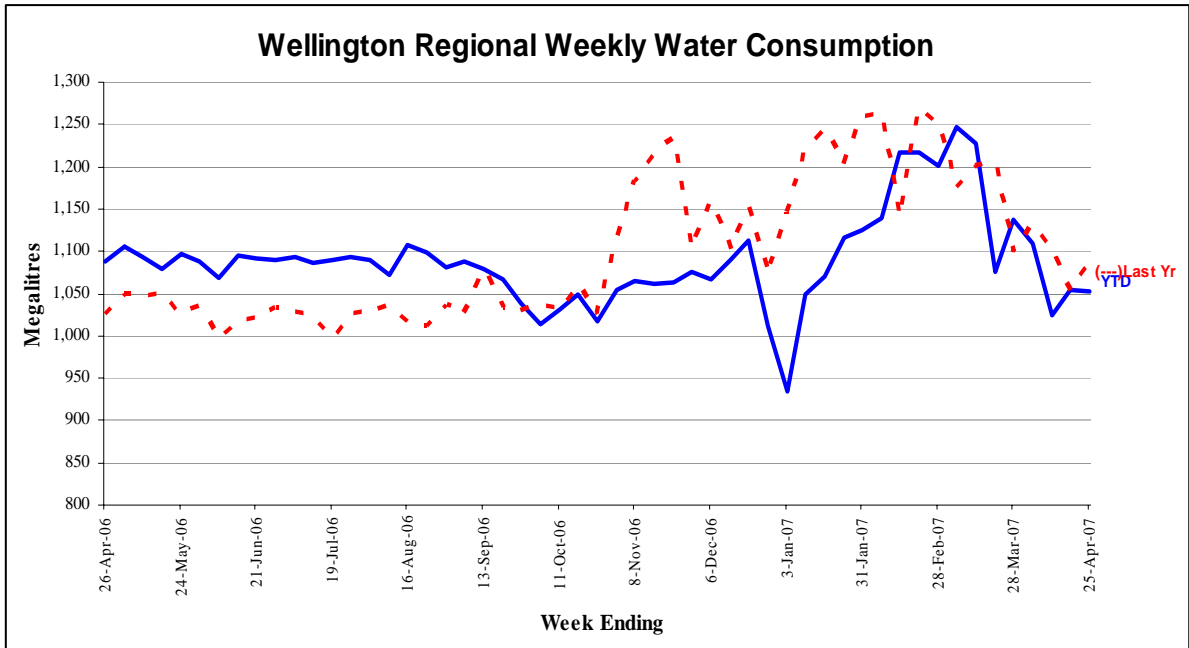
This campaign has been branded *Be the Difference* since January 2005, which was the first season of the “watch sprinkler” and “desert or oasis” advertisements. The campaign's key messages were created in consultation with the *Be the Difference* brand manager. A “tap hanger” was sent to all *Be the Difference* members as a tangible reminder of how they could save water in the garden.

3.3 Learnings

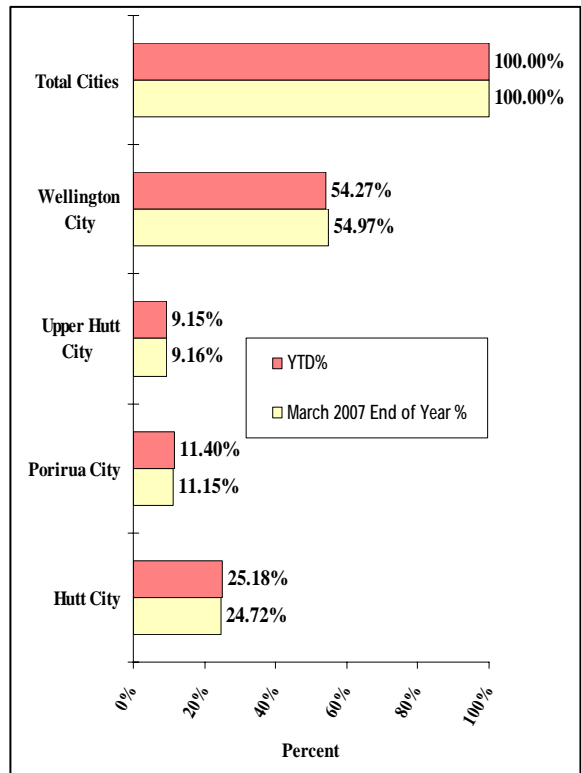
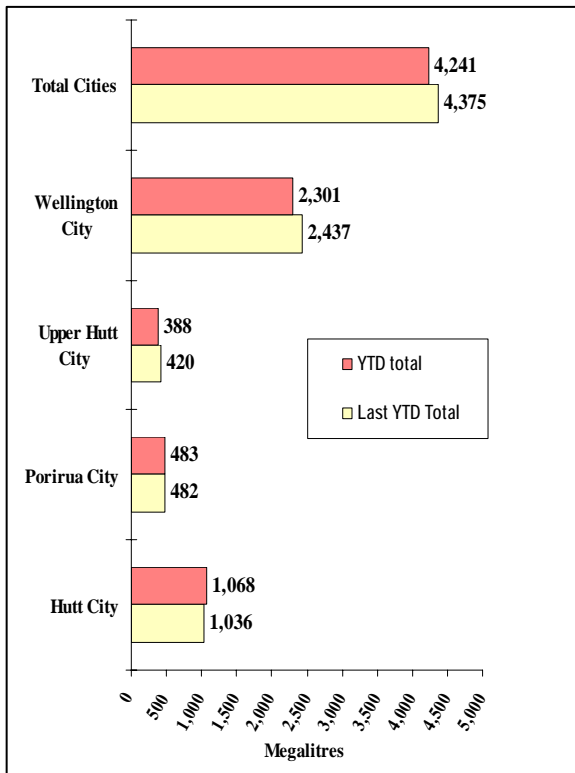
- There is a distinct difference between people’s attitudes and behaviour regarding water conservation. Many regard it as someone else’s problem. To increase general awareness of water consumption issues, aiming to increase willingness to take action will require ongoing commitment.
- A more intensive personally directed programme of communication can affect people’s water consumption behaviour - if they are open to doing that in the first place.
- Get better information:
 - Commission research to update our knowledge of people’s attitudes and behaviour in relation to water consumption (planned for the 2007/8 financial year).
 - Optimise confidence in the Wellington Water Management Plan technical information (this work is under way).
- Foster relationships with key organisations, so that advertising, promotion, publicity, education, incentives and appropriate regulation from the relevant agencies are working in unison to deliver clear and

appropriate messages. Explore opportunities for innovative advertising and/or other methods of raising the campaign's profile. We will be able to further this work with the increase in Marketing and Design staffing planned for 2007/08.

Water sold over the last 12 months



Water sold from 1 April 2007 to 30 April 2008



Laboratory

February 2007

Laboratory Review of operations for the period ended 30 April 2007

1. Items of note

- Laboratory finances dipped slightly into the red this period because of a combination of factors such as building maintenance undertaken, materials and extra work being subcontracted out.
- The Laboratory Microbiologist resigned effective as of 27 April 2007. A replacement is not being sought.
- We inexorably march on toward the disestablishment of Laboratory Services, with the decisive step made to proceed with the nomination of a “preferred tenderer”. Negotiations over the Contract for water testing work are under way, with the dotted line expected to be signed mid-April.

2. Business summary

Quality

There were no requests for retesting samples and most test reports were timely.

3. Health and safety

There were no accidents or incidents, nor time lost during the period.

Forests Department

March/April 2007

Forests Department Review of operations for the period ended 30 April 2007

1. Metro Forests

1.1 Log Harvest Contract

“Summer” continued through both months, enabling production rates to remain high. Apart from a trucking “glitch” at the end of March, there were no problems moving logs off-site to both domestic customers and the port. The transport problem arose after the port ran out of capacity and transferred log stacks to the reclaim area at Kaiwharawhara. Although none of our production ended up at the reclaim trucks with other companies, product had their round trip time extended by up to 90 minutes effectively, reducing their daily output by one load per day. The extension of time arose from the need to first go to Hinemoa Street to have the load measured and weighed, then to travel to the reclaim to unload and then back to Hinemoa Street to be reweighed and load their trailer. During this time most crews produced as normal and stocks held in the forest grew on a daily basis. When the port reopened for logs, it took over a week to reduce stocks to “normal” levels.

In March Log 36, the hauler crew, produced 1,524 tonnes from Dick’s Yard and 658 tonnes from Blowfly, followed by a further 2,435 tonnes from Blowfly in April. Log 6 was based at Longspur for the period and produced 2,975 tonnes in March, followed by 2,256 tonnes in April.

Total revenue for the two months was \$373,056, at an average of \$37.80 per tonne.

Table 1 – Log 36 Puketiro 5.01- Output by Grade - Dick’s Yard

Grade	March 2007	
	Tonnes	%
Pruned	29.71	1.95
Part pruned	0	0
S Grade	412.05	27.02
L Grade	101.04	6.63
R Grade	172.22	11.30
K Sawlog	224.17	14.70
Roundwood	0	0
K Rough	502.36	32.95
Dom Rough	83.17	5.45
Pulp	0	0
Export pulp	0	0
Total	1,524.72	

Table 2 – Log 36 Puketiro 1.01- Output by Grade -Blowfly

Grade	March 2007		April 2007	
	Tonnes	%	Tonnes	%
Pruned	41.52	6.30	175.99	7.17
Part pruned	0	0	0	0
S Grade	115.57	17.55	856.75	34.92
L Grade	0	0	0	0
R Grade	59.76	9.07	364.00	14.83
K Sawlog	143.60	21.81	458.08	18.67
Roundwood	0	0	0	0
K Rough	270.34	41.05	462.30	18.84
Dom Rough	0	0	42.07	1.71
Pulp	0	0	30.44	1.24
Export pulp	0	0	64.18	2.62
Total	658.54		2,453.81	

Table 3 –Log 6 - Valley View - Output by Grade - Longspur

Grade	March 2007		April 2007	
	Tonnes	%		%
S Grade	1382.47	46.46	659.20	29.22
L Grade	0	0	0	0
R Grade	578.95	19.46	361.40	16.02
K Sawlog	287.77	9.67	469.92	20.83
Roundwood	0	0	0	0
K Rough	263.92	8.87	415.64	18.42
Dom Rough	163.93	5.51	115.14	5.10
Pulp	298.65	10.04	201.95	8.95
O/S Pulp	0	0	0	0
Export pulp	0	0	32.86	1.46
Total	2,975.69		2,256.11	

Revenue for March totalled \$195,263 at an average of \$37.85 per tonne
Revenue for April was \$177,793 at an average of \$37.75 per tonne.

1.2 Silviculture Contract

The earlier problems around staffing that have beset the Silvicultural Contractor continued until mid-April when the Contractor was successful in attracting a crew from the central North Island. While this has increased progress, observations suggest that this crew will need ongoing supervision.

In March 12.7 ha were completed and in April a further 6.9 ha. To date, 53.1 ha have been completed out of a programmed 117.3 ha.

1.3 Plantation Forestry Operations

During this period RES the wind farm licensee erected two 80 m anemometer masts, one on the “257” track and one at the 19 km in Puketiro Forest. The top 50 m of each mast were erected with the aid of a helicopter. This involved two riggers climbing to the 30 m height to receive and fix a 12 m section of tower delivered hanging from the helicopter. When this was secure, they climbed up a further 12 m to fix another section - not an occupation for the faint hearted. These projects were completed without disruption to logging operations.

The roads continue to hold up well, although they are extremely hard and have no fines left. We have had to repair three slumped sections in Puketiro and will have to grade these areas to restore the desired road shape in the near future. We have had several “stalls” between the 20 km and 21 km in Puketiro. This is a relatively new section of road that has not been used for two years. Following light rain the hill section becomes very slippery and the trucks have to be assisted to the top of the hill.

It is hoped that Log 36 can remain at Blowfly until around mid-June when they will withdraw to Valley View for the balance of the winter.

Our source of ‘millings’ has dried up, so we have been unable to complete two badly pot holed areas between the 1 km and 2 km in Valley View. We may have to look for another solution for this section.

Log 36 has constructed a short spur road to a new skid west of the original skid. Log 6 has upgraded the road into Kilometre and is about to open up Parry’s Bush.

1.4 Forest Access

Maungakotukutuku access remains the only significant problem, with the only access requiring two crossings of the Maungakotukutuku Stream. We have been in discussions with our neighbours to the north over logging access routes and the option of sharing these. Nothing definitive has been agreed as yet.

1.5 Market Trends

The tariffs that the Russian Government was intending to impose on export logs appears to have been “watered down”, with suggestions that it will not now be imposed before 2011. Either way the uncertainty can only benefit our export prospects.

The peak prices that applied in January and February have now drifted off their peak, having fallen by about \$2 to \$3 dollars each month. Of more concern to the industry is the up to 50 percent increase in shipping costs. We will avoid most of this impact as Rayonier New Zealand has locked in their shipping cost for most of the year.

2. Reserve Forests

2.1 Tauanui logging

The Logging Contractor returned to Tauanui at the end of March. One hundred and ninety tonnes of logs were produced from the trees extracted during the course of road formation. Logging during April was interrupted while the Contractor was elsewhere. Now that the Contractor has returned, logging has been carried out alongside the new road in very large trees. Some are around 10 tonnes in weight (compared with the usual 2.5 tonne to 3 tonne average tree size).

April production figures were 1,105 tonnes for \$30,414.

The availability of logging trucks when required has improved now that a Masterton based firm has been engaged as the primary contractor.

Options are being considered to identify the most suitable and cost efficient crossing of the Tauanui River to access the 70 ha of trees planted on the northern side. Options range from a ford - which would limit access to low flow periods - to some form of bridge that could be dismantled and reused at Hiwinui. The bridge option would ensure access and prevent workers and equipment being isolated when the river floods.

2.2 Lincoln students

A day was spent with 65 Lincoln University agricultural science/commerce students using the Stoney Creek DVD to provide an introduction to erosion control forestry and then visiting several forestry projects on the way to the Pottinger property at Tinui.

This is an annual field trip where students tour a number of hill country farms to learn about farming and land management options. Forestry input has been requested and provided for the last 10 years.

Sites along the route are visited so the students can gain an appreciation of general forestry management and see the impact of variation of timing and quality of management on the final crop.

2.3 Rural fire

With the recent rain, the prohibited fire season within the Wairarapa has been reduced to a restricted season (permits required for lighting fires in the open). This has led to a hectic week of Rural Fire Duty, as those holding permits for some time ring to advise that they are going to burn.

High fuel loadings and the need for extreme caution have been highlighted in two fires that have required Fire Service urban and rural multiple appliance turn out this week. In addition, numerous 111 calls as a result of smoke sightings have occurred with the change of fire season status.

2.4 Stoney Creek wind farm proposal

The first prospective Tenderers inspected the proposed site on Monday, 30 April, and a further Tender is expected in mid-May. .

2.5 Rough Hill fence

Slow progress is being made with the clearing of the agreed fence line between Rough Hill and Wairangi. Two breakdowns of Mr Franks' bulldozer have resulted in this phase of the project taking longer than anticipated.

The need for a speedy completion of this clearing has been communicated to Mr Franks.