

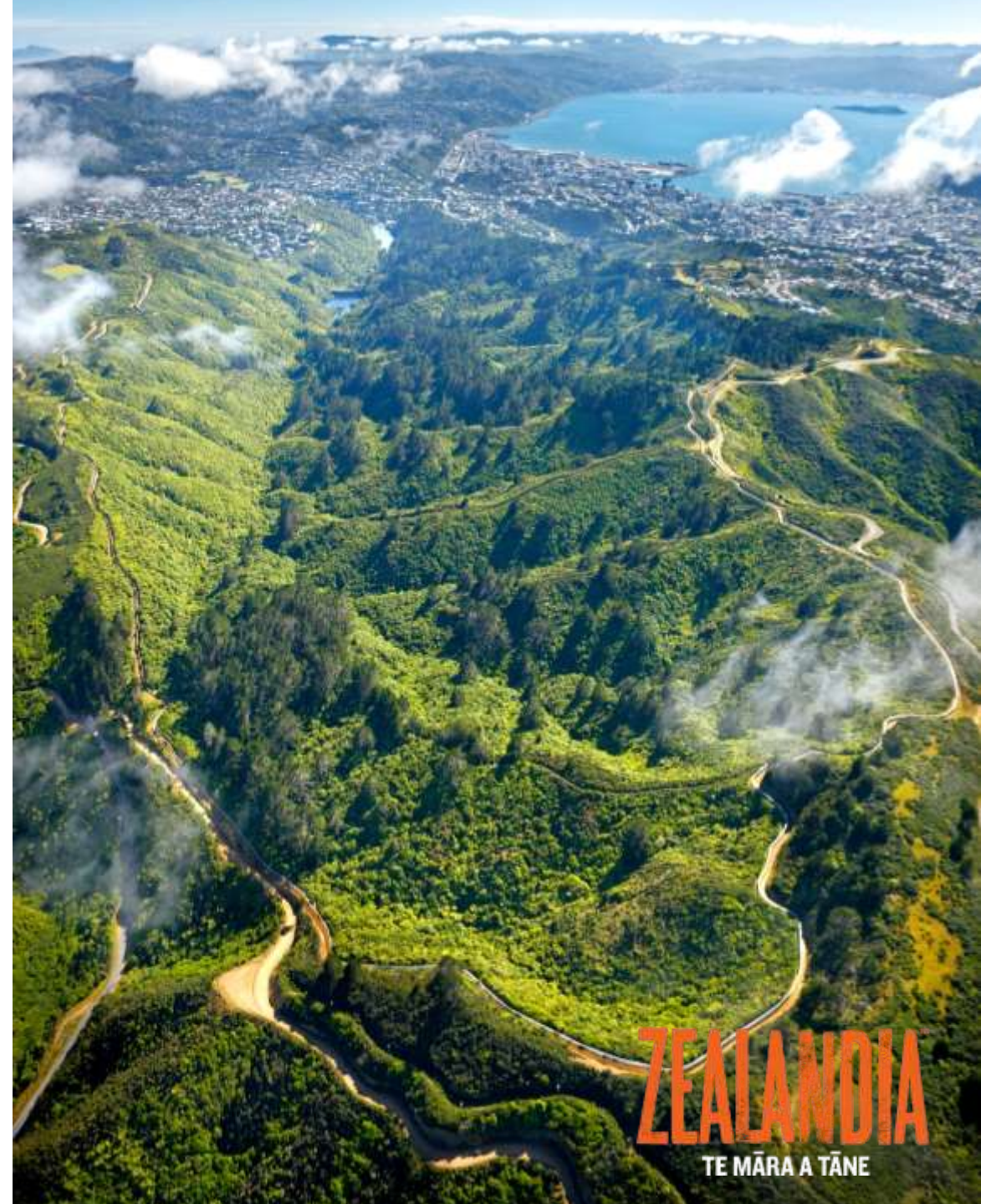
SANCTUARY TO SEA

KIA MAURIORA TE KAIWHARAWHARA

Pascale Michel
Project Leader
Conservation
& Research

Aaria Dobson-Waitere
Kaitiaki Ranger
Conservation

SanctuaryToSea@visitzealandia.com

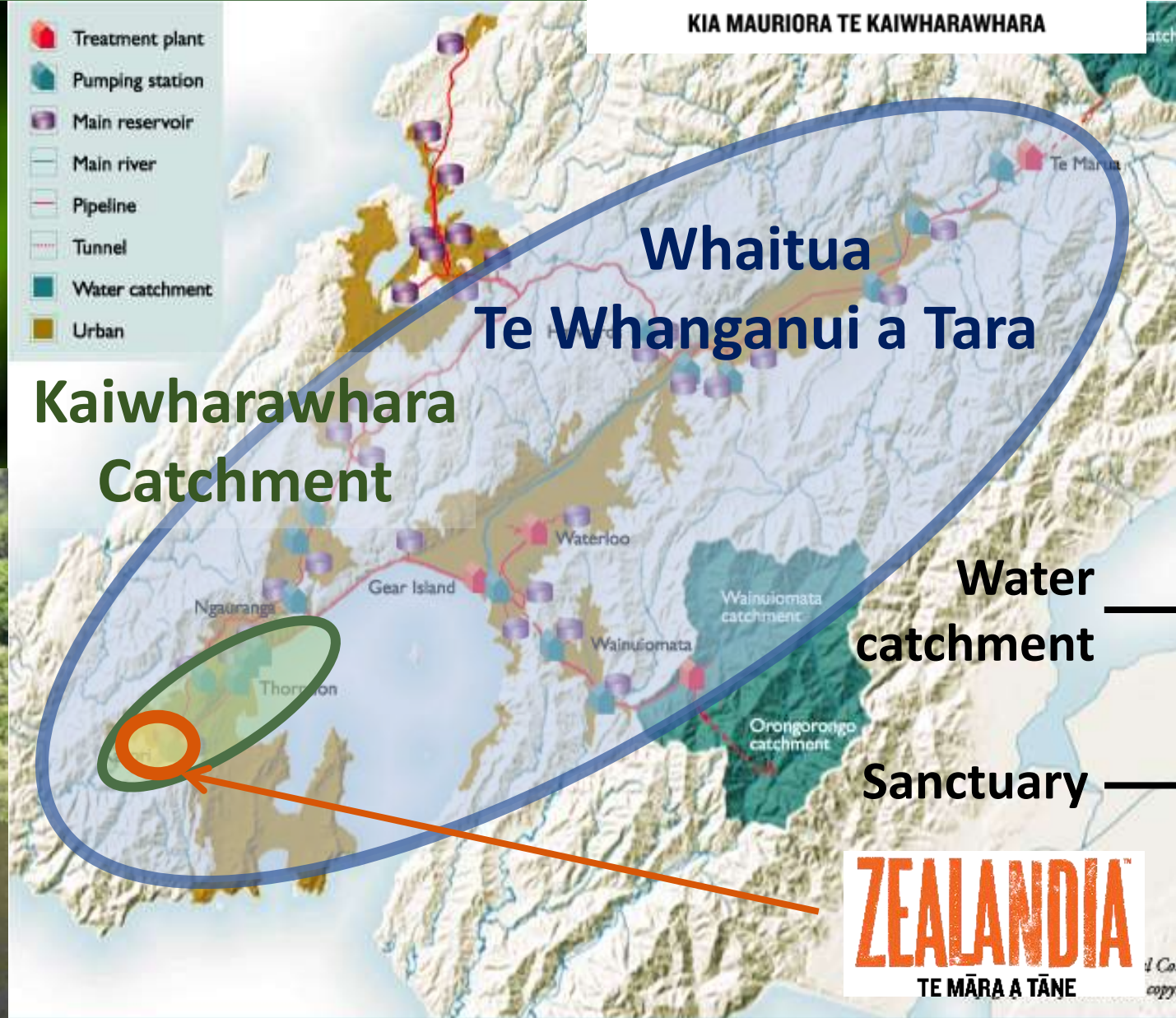


ZEALANDIA
TE MĀRA A TĀNE

THE KAIWHARAWHARA CATCHMENT

SANCTUARY TO SEA

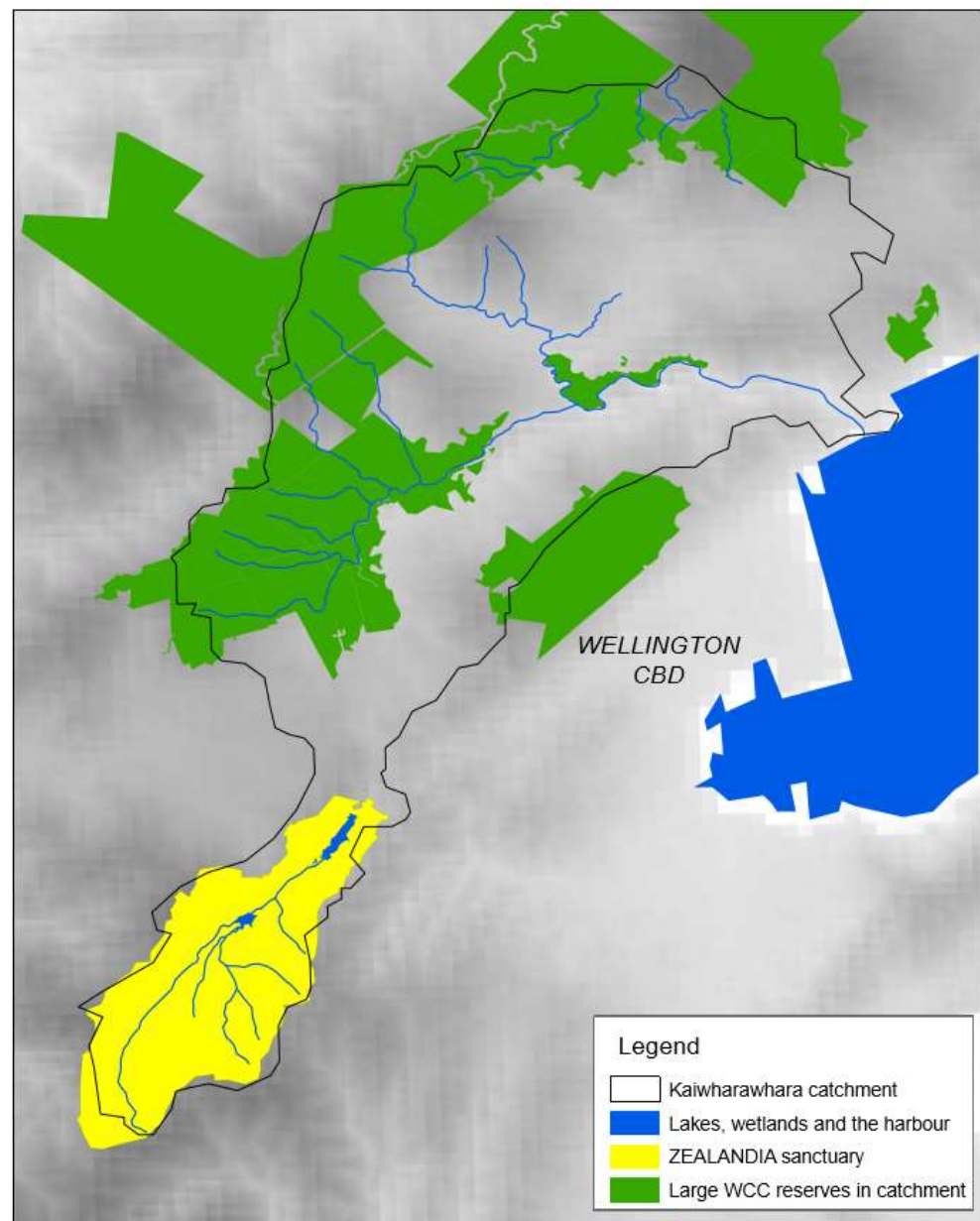
KIA MAURIORA TE KAIWHARAWHARA



THE KAIWHARAWHARA CATCHMENT

SANCTUARY TO SEA

KIA MAURIORA TE KAIWHARAWHARA



- largest stream system in WC (16.7km²), headwaters within an Zealandia sanctuary
- Last natural open estuary, culturally important
- 34% remaining native bush cover
- 13 species of native fish & inanga spawning

CHALLENGES

- Degraded water quality and modified hydrology
- Fragmented wildlife habitats, major fish barriers
- A high density of animal and plant pests
- A community that has experienced a major disconnect to the land & nature

ZEALANDIA
TE MĀRA A TĀNE

THE PROJECT HISTORY

SANCTUARY TO SEA

KIA MAURIORA TE KAIWHARAWHARA

2017

Scoping phase
Community
Engagement

- Integrated Catchment management (ICM)
- Project Kaiwharawhara (2003-2012)
- Quarterly Community meeting (03/17 – 8)
- Strategy group (09/17 – 8)

2018

Strategy
2018-2028
Development

- **Strategy** that outlines principles
 - **100-Year Vision**
 - **Objectives 2018-2028**
 - **Unformal structure** based on collaboration

2019

Working Plan
2018-2028
Development

- **ZEALANDIA**
Strategic partners
Other partners & stakeholders

- **Action Plan** that guides actions

DOC

GWRC

Morphum
Environmental

Te Atiawa/Taranaki
Whānui

WCC

Wellington Water

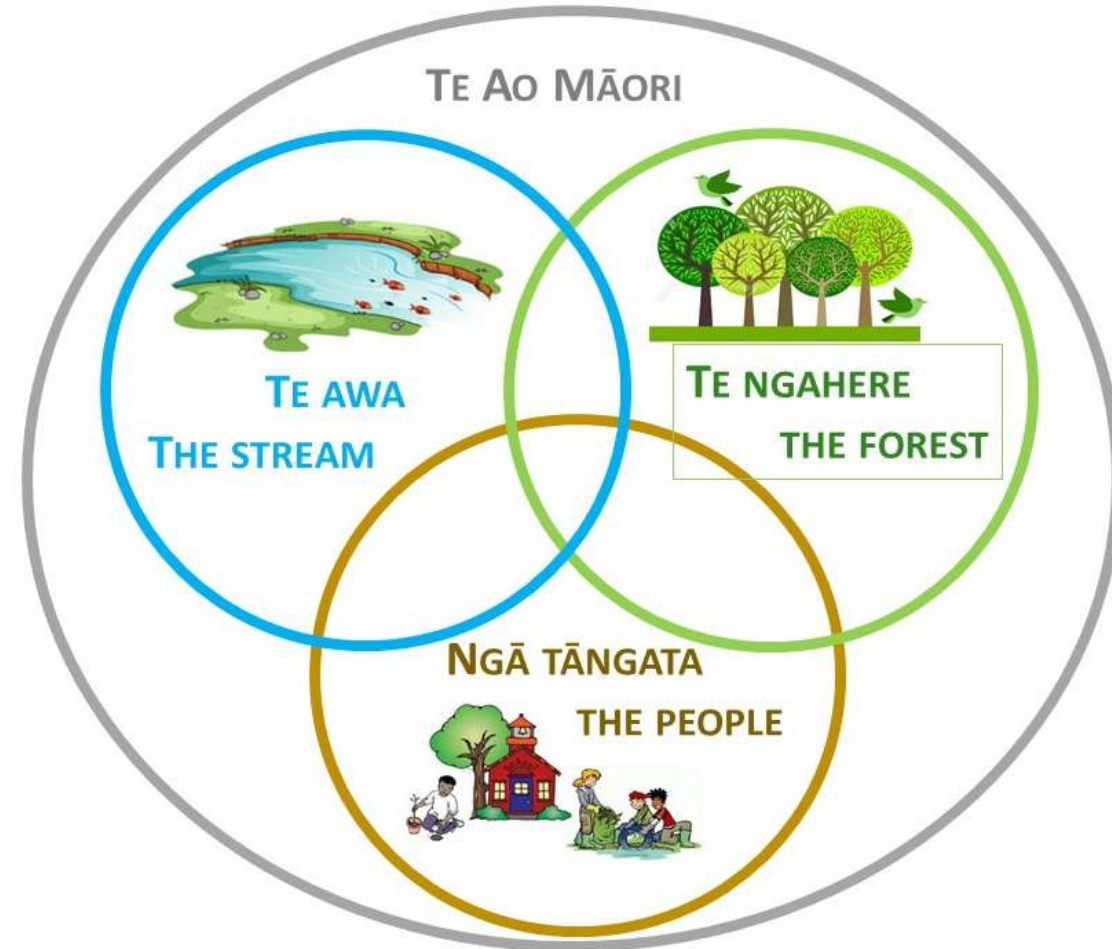
ZEALANDIA
TE MĀRA A TĀNE

OBJECTIVES & ACTIONS 2018-2028

SANCTUARY TO SEA

KIA MAURIORA TE KAIWHARAWHARA

- Recognise the catchment as a living entity, & encourage active involvement in restoration
- Support mana whenua in reconnecting to the Kaiwharawhara catchment
- Ensure aquatic & terrestrial native wildlife thrives in healthy connected habitats
- Develop accessible high quality information that supports decision making and informs the public & ensure our work is exemplary in the area of catchment restoration



ZEALANDIA™
TE MĀRA A TĀNE

CURRENT PROJECTS

- Te ao Māori foundation – Te tini o Hākuturi
- Zealandia Lower Lake rehabilitation & Wetland enrichment
- Stormwater infrastructure & Water sensitive urban design
- Business in Conservation
- Kaiwharawhara lower stream & estuary
- ‘Parallel’ projects:
 - Fish passage (*WCC/GWRC*)
 - Water quality monitoring (*GWRC/WBC*)
 - Plastic Project (*NIWA*)

SANCTUARY TO SEA

KIA MAURIORA TE KAIWHARAWHARA



ZEALANDIA

TE MĀRA A TĀNE



ZEALANDIA
TE MĀRA A TĀNE

NIWA
Te Hono Nukurangi

Department of
Conservation
Te Papa Atarau

Te Tini o Hākuturi

Kaitiaki monitoring in the Kaiwharawhara catchment
hakuturiroopu@gmail.com