

WHAITUA KĀPITI ADVISORY COMMITTEE MINUTES

The Whaitua Kāpiti Committee was convened for its sixth Tiriti Whare hui at 9.30 A.M on July 19, 2023, at Ramaroa Centre, Whareroa (Known as QEP)

Committee members present:

Mana Whenua Whare	Facilitator	Kāwanatanga Whare
Dr. Aroha Spinks, Ngā Hapū o Ōtaki	Dr. Kathie Irwin (Kathie Irwin & Associates)	Jenny Rowan (<i>Taurite</i>), Kāpiti Coast community representative
Caleb Royal, Ngā Hapū o Ōtaki		Jocelyn Prvanov, Kāpiti Coast District Councillor
Dr. Mahina-a-rangi Baker (<i>Taurite</i>), Ātiawa ki Whakarongotai Charitable Trust		Kerry Walker, Kāpiti Coast community representative
Naomi Solomon, Ngāti Toa Rangatira		Monique Leith, Kāpiti Coast community representative
Sharlene Maoate-Davis, Ātiawa ki Whakarongotai Charitable Trust		Pātaka Moore, Kāpiti Coast community representative
Shane Parata, Ngāti Toa Rangatira		Penny Gaylor, Greater Wellington Regional Councillor

Apologies:

Caleb Royal – Ngā Hapū o Ōtaki, Mana Whenua Whare
Naomi Solomon – Ngāti Toa Rangatira, Mana Whenua Whare

Kaimahi present:

Mana Whenua Whare	Role and responsibility
Aaria Dobson-Waitere (<i>Online</i>) Ātiawa ki Whakarongotai Charitable Trust	Ātiawa ki Whakarongotai Charitable Trust kaimahi
Amiee Rei-Bishop (<i>Online</i>), Ngāti Toa Rangatira	Ngāti Toa Rangatira kaimahi
Claire Gibb, Ātiawa ki Whakarongotai Charitable Trust	Co-ordinator

Council kaimahi	Role and responsibility
Theressa Murray, TMS Transcriptions Services Ltd	Transcription for Monique
Chloë Nannestad, GWRC	Policy Advisor, Supporting policy development for WIP and plan change
Jade Lee-Walker, GWRC	Supporting policy development for WIP and plan change lead on freshwater values information
Michele Frank, GWRC	Kāpiti Coast Catchment Manager, Whaitua Kāpiti project lead
Penny Fairbrother, GWRC	Senior Advisor Integration and Insights, western science co-ordination and communication, and technical lead on FMUs for this meeting.
Phill Barker, GWRC	Senior Catchment Advisor, Programme plan, delivery and capturing meeting actions
Rita O'Brien, KCDC	Stormwater & Coastal Engineer, KCDC lead on Whaitua Kāpiti project
Tania Parata, GWRC	Director Mana Whenua Partnerships, GW leadership support for Whaitua programme

Tim Sharp, GWRC	Te Whanganui-a-Tara Catchment Manager, supporting deliberations on NPS-FM content and plan change process
Tim Stoddart, Contractor (Incite)	Senior Planner to advise on plan change aspects; support drafting RMA section 32 and plan provisions for Kāwanatanga whare
Whāia te kikorangi Caton, GWRC	Catchment Advisor, Meeting logistics and minutes

PROPOSED AGENDA (Set prior to this meeting)

9:00am – Gather at venue, tea, and coffee.

9:30 am – Start

- 1) Karakia, Mihi and Welcome
- 2) Confirm agenda and tabled action update for the day.
- 3) Te Mana o te Wai Expression
 - a. Kāwanatanga Whare propose further expression of TMotW and its principles.
 - b. Workshopping to develop collective expression of TMotW and its principles for the Kāpiti context and communities in the WIP.
- 4) Te Mana o te Wai Plan Objective
 - a. Workshopping to develop the expression of TMotW to a planning objective template.

10:45am Morning Tea (15mins)

- 5) Freshwater Management Units (FMUs)
 - a. Mana Whenua Whare – Present a first draft of the spatial extent of FMUs as they relate to kaitiaki responsibilities and other considerations.
 - b. Kāwanatanga Whare – Present on planning considerations and approach to determining FMUs.
 - c. Workshopping to develop and jointly determine a single set of spatial units as FMUs for the Natural Resources Plan (NRP), and to organise information for the rest of the process.

12:30pm Lunch (30mins)

- 6) Individual Whare Caucus time
- 7) Feedback and discussion from Whare Caucus time
- 8) Long-term Freshwater Vision
 - a. Mana Whenua Whare – Present a long-term freshwater vision and the themes or ideas that inform it.
 - b. Kāwanatanga Whare – Present a long-term freshwater vision and the themes or ideas that inform it.
 - c. Workshopping to develop a long-term freshwater vision for the Whaitua that meets the requirements of the NPS-FM, to a decision template.

3:00pm Afternoon tea (15mins)

- 9) Next steps/ Agenda for next hui
- 10) Closing comments, recap key actions and agreements.

4:30pm – Finish and Depart

ITEM 1 – KARAKIA, MIHI AND WELCOME

The meeting was opened with a karakia. Matariki was acknowledge and remembering those people who have passed.

ITEM 2 – CONFIRM AGENDA AND TABLED ACTION UPDATE FOR THE DAY

The minutes from June 21 hui was emailed and accepted by the committee.

The action register was discussed and GWRC kaimahi provided verbal updates.

ITEM 3 – TE MANA O TE WAI (TMotW) EXPRESSION

Kāwanatanga Whare propose further expression of TMotW and its principles.

The Kāwanatanga Whare shared a PowerPoint presentation (*Appendix 1*) on the further expressions of TMotW and the 3 crown principles. The Kāwanatanga Whare Committee members stated that these are initial thoughts and are to be refined once the Mana Whenua Whare has put forward their perspective.

3.1 The presentation started with the principle: **Governance.**

The Committee then discussed the importance of language in policy, the Māori perspective that recognises the interdependency of the health of people and the health of the whenua, as well as the Resource Management legacy of balancing priorities.

The Mana Whenua Whare suggested the Kāwanatanga Whare discusses the term 'Good Governance' at their Tiriti Training on 4 August and provide feedback from this training at the next Tiriti Whare hui.

Action – GWRC Kaimahi to seek legal advice on the terminology of including 'good' governance in planning framework/policies and provide to Kāwanatanga whare. Noting, that the NPS-FM only uses the term Governance - Is there any reason why you wouldn't in regulation.

The Mana Whenua Whare suggested inserting the documents provided from the Kāwanatanga Whare and comments from this discussion, into WIP template to prepare for the TMotW statement drafting.

The meeting broke for morning tea.

Kathie welcomed back the group back from morning tea.

The Mana Whenua Whare requested having a clear statement that the relationship Māori have with the whenua is not including in balancing interests and putting water first in the hierarchy.

The group discussed how the intention of words can differ with the interpretation and application.

Action – GWRC kaimahi to pull together wording of the RMA regarding safeguarding life-supporting capacity and align this to the language of Te Mana o te Wai. Including comment on why the case law (courts and consents) implementation has been about 'balancing interests' and perspective on why the difference between the intent and its application exists.

3.2 The Kāwanatanga Whare presentation continued with the principle: **Stewardship.**

The group discussed the intergenerational aspect of stewardship, and the role that Enviroschool communities have with growing an environmentally educated community. They also discussed the importance of considering young voices in this conversation, as the next generation comes to decision-making roles.

They also discussed how to change systems and structures to achieve positive behavioural change that benefits the environment. For Māori, following tikanga and being held accountable by your whānau and community controls behaviour. Ideas were discussed that perhaps Pākehā are accountable to the governing body and the rules they create.

The Committee suggested that being a good steward of the environment involves transparency and education, and while the government has to be accountable, the community is also responsible.

3.3 The Kāwanatanga Whare presented on the last principle: **Care and Respect.**

The Committee members discussed the Pākehā system and the cultural trait of imperial decision making, where local and central government create the rules that they also enforce. The wider community are not educated to know how decisions are made; therefore, they are disconnected to how the waste system works and how to care and respect it properly.

A story was shared on the importance of communities understanding what happens to their waste. A committee member stated that a local marae was the recipient of their towns waste for 40 years. Sewage was discharged in a nearby stream from where people collected kai. This being an example that some people are familiar with seeing waste, while other people in the same community are able to flush their waste without seeing or experiencing the impact.

The committee discussed the opportunity to use a dual approach and being mindful of each other's tikanga and expectations. A committee member stated that information management systems hold data that can favour one specific scientific perspective and often excludes the social science and Mātauranga Māori. The limitations placed on accessing and managing information is an important issue to consider, and making sure people can make informed decisions on how communities and councils are behaving for today and the future. It was suggested to get this concept into GWRC's long-term plan, to avoid waiting another 3-year cycle.

Mana Whenua Whare asked GWRC Project Manager if the TMotW draft objective was completed today and finalised next month, if there were any limitations to propose this as a consultative piece for their communities, rather than leaving it until the WIP is completed to engage with their people. GWRC Project Manager confirmed this was okay.

This question raised the Communications Plan discussion.

Both Whare agreed that a video discussing the awa, tuna and what this process is about would be an effective tool to connect and change people's thinking, rather than just releasing a document. The committee suggested there is time to organise a communication plan to engage with their communities.

The committee agreed to start looking at the WIP template and created a plan to merge content for TMotW statement.

The meeting broke for lunch.

ITEM 4 – INDIVIDUAL WHARE CAUCUS TIME

The two Whare caucused on the WIP template document.

Minutes are not taken during caucus time.

ITEM 5 – FEEDBACK AND DISCUSSION FROM WHARE CAUCUS TIME

The two Whare came back together and provided feedback from their caucus.

The Kāwanatanga Whare shared that they only discussed Governance, and that they are comfortable with the use overall. On page 1 under 'Policy objective' they noted the term 'western/tangata Tiriti' and confirmed they will be discussing the term 'Pākehā' at the Tiriti training on 4 August and provide feedback from this training at the next Tiriti Whare hui.

Action – Kāwanatanga Whare committee members to wānanga on the use of terms Pākehā, Western science/systems, tāngata Tiriti, Tiriti articles and principles, community/wider community, governance, British Crown/Crown at their Tiriti training hui on August 4th with Whaea Kathie.

The Mana Whenua Whare shared they want to hear what speaks to the heart of the Kāwanatanga Whare and community and support them standing in their mana as they articulate emotive language when discussing TMotW. They expressed that if the Kāwanatanga Whare don't have the words to express all emotions, they will koha how they articulate it to them and share these statements. Noting that it is important that it is expressed through these Pākehā concepts.

The feedback that they shared from their caucus time, was making sure the plan is intergenerational. From a Mātauranga Māori perspective, the information that is shared isn't solely from current thinking, it is kōrero that has been passed down. They spoke to the difference between the constant review process vs. passing down a statement/commentary to reflect the wisdom from your generation to the next.

A Committee member from the Kāwanatanga Whare agreed in principle but stated that GWRC is required to review plans every 10 years, alongside fiscal planning, and long-term plans.

The Committee agreed to go through what they have written for each principle in their TMotW statements, located in the WIP template, and start merging the kōrero from both Whare to seek agreement.

The committee have already agreed that they will have 1 WIP plan and 1 TMotW statement, though retaining different cultural commentary where needed.

The Kāwanatanga Whare will take lead on their concepts/principles, likewise the Mana Whenua Whare will take lead with their concepts/principles, and once they are merged, they will own them together.

ITEM 6 – WORKSHOPPING TO DEVELOP COLLECTIVE EXPRESSION OF TMOTW AND ITS PRINCIPLES FOR THE KĀPITI CONTEXT AND COMMUNITIES IN THE WIP

Kaimahi shared the WIP template on screen for the Committee members to collectively workshop the TMOtW principle and plan objective statements, to create a draft shared statement.

The Mana Whenua Whare noted the value of getting these statements completed as there is mana from this Whaitua group that has been recognised by the Regional Council. Currently, GWRC's Regional Policy Statement (RPS) is in the hearing process, and Ātiawa has been presenting their submission on 29 June and 18 July. At hearing stream 2 for the RPS (Integrated Management), the chair from the hearing panel has asked for TMotW statements from the Whaitua Kāpiti process. Mana Whenua Whare stated that if it is not in submission, it is not up for consideration, and what the panel chair may be asking for is information to support their decision making relating to TMotW. The sooner the statement is completed, the sooner the Committee can influence this space.

The group continued discusses the detail wording of the TMotW statements.

Decision – To consistently use the Terms of Reference language for describing the Mana Whenua House as such in the WIP.

The meeting broke for afternoon tea.

The group came back together and continued with the same agenda item. They discussed each bullet point and agreed to the words in draft.

The Mana Whenua Whare asked the Kāwanatanga Whare to adopt the TMotW principles statement as a final draft (*Appendix 2*).

Decision – The Committee adopted the shared Te Mana o te Wai principles text as the final draft version (Box 1 in table of the WIP template). Waiata sung to mark the decision the Committee has made.

The committee members had conflicting views on whether to continue with re-writing the 'Good Governance' section. Comments were raised that GWRC's audit process does not measure outcomes, and good governance is focused on delivering community aspirations, and finalising this would do it justice.

Agreed – Committee to continue with finalising the draft of good governance.

ITEM 6 – NEXT STEPS / AGENDA FOR NEXT HUI

Mana Whenua Whare co-ordinator stated that the WIP template will move to the Whaitua SharePoint site and will be regularly updated by kaimahi from both Whare.

Committee requested another opportunity before handing over to kaimahi.

Decision – To hold the Te Mana o te Wai expression text drafted at the 19 July hui, as internal work not to be shared externally until the end of the next meeting for further review and development by both Whare.

The agenda for the next Committee hui was not set.

ITEM 7 – CLOSING COMMENTS, RECAP KEY ACTIONS AND AGREEMENTS

Next meeting: Wednesday 9 August 2023.

Pātaka thanked everyone for their mahi and closed hui with karakia.

END OF DAY

CONFIRMED ACTION REGISTER

Note that all actions captured during the Committee meeting must be clearly stated as an action and providing instruction to minute taker to note down. If there is no clear instruction to capture an action, it will be included in the requests log/eddy.

Opened	Action	Update	Owner
05/04/23	GWRC kaimahi to produce a paper on respective roles and enforcement powers of GWRC and KCDC.	<u>June note:</u> <ul style="list-style-type: none"> In progress. 	GWRC kaimahi
05/04/23	GWRC kaimahi to produce and present a technical paper on the limit setting process, that addresses where allocation is at, and includes commentary from mana whenua for the right to use water.	<u>June note:</u> <ul style="list-style-type: none"> This information is available however it is proposed to be provided as part of the water allocation topic, rather than out of sequence. 	GWRC kaimahi
05/04/23	GWRC kaimahi to produce a glossary of 'policy jargon' and identify commonly used Māori terms, to support the committee's decision making.	<u>June note:</u> <ul style="list-style-type: none"> Draft prepared. However, definitions are in the NPS-FM itself. Proposed that jargon be explained as they arise through the process. 	GWRC kaimahi
05/04/23	GWRC kaimahi will follow up with members about remaining bios and photos for the GWRC website.	<u>June note:</u> <ul style="list-style-type: none"> Still waiting on a few bios and photos. 	GWRC kaimahi
10/05/23	GWRC kaimahi to report to the long-term plan (LTP) committee to understand the connection, start thinking about whitua implementation and to connect with KCDC's officers to support as well.	<u>June note:</u> <ul style="list-style-type: none"> In progress. 	GWRC kaimahi
21/06/23	GWRC kaimahi to seek approval for the Kāwanatanga Whare Committee members to be retained for the second phase of the Whitua Kāpiti process and for the Committee leading the process and writing the Section 32 report.	<u>July note:</u> <ul style="list-style-type: none"> In progress 	GWRC kaimahi
21/06/23	GWRC kaimahi to report to what extent their organisation is progressing the rights and interests of iwi and Māori for freshwater in relation to mana whakahaere		GWRC kaimahi
21/06/23	GWRC kaimahi to seek direction from the Kāwanatanga Whare on allocating or procuring resource for WIP and (RMA) Section 32 writing personnel.		GWRC kaimahi
21/06/23	GWRC kaimahi to seek direction from the Kāwanatanga Whare regarding the time commitment concerns and review the Terms of Reference for appropriate of resourcing together.		GWRC kaimahi
21/06/23	GWRC kaimahi to seek direction from the Mana Whenua Whare on procurement for resourcing WIP, Section 32 writing personnel and support for caucus minutes.		GWRC kaimahi

21/06/23	GWRC kaimahi to investigate the use, information, and privacy management of TMS transcripts as a resource for (RMA) Section 32 and WIP reports and email the Committee prior to the July Tiriti Whare hui.		GWRC kaimahi
21/06/23	GWRC Kaimahi and Mana Whenua Whare kaimahi to create a comprehensive WIP report template for the Committee, that contains a simple decision-making item template to test how agenda items fit into and progress the substance of the WIP and (RMA) section 32 reports.	<u>June note:</u> <ul style="list-style-type: none"> This will be supplied at the 19 July hui. 	Kaimahi from both whare
21/06/23	GWRC kaimahi to seek information on the inclusion of Kāpiti Island in the Whaitua Committee's decisions and report to the Committee prior to July Tiriti Whare hui.		GWRC kaimahi
19/07/23	GWRC kaimahi to seek legal advice on the terminology of including 'good' governance in planning framework/policies and provide to Kāwanatanga whare. Noting, that the NPS-FM only uses the term Governance - Is there any reason why you wouldn't in regulation.		
19/07/23	GWRC kaimahi to pull together wording of the RMA regarding safeguarding life-supporting capacity and align this to the language of Te Mana o te Wai. Including comment on why the case law (courts and consents) implementation has been about 'balancing interests' and perspective on why the difference between the intent and its application exists.		
19/07/23	Kāwanatanga Whare committee members to wānanga on the use of terms Pākehā, Western science/systems, tāngata Tiriti, Tiriti articles and principles, community/wider community, governance, British Crown/Crown at their Tiriti training hui on August 4th with Whaea Kathie	<u>July note:</u> <ul style="list-style-type: none"> This action now absorbs and resolved the request noted in the requests table set in the May hui requesting "An in-depth session with Kathie, to understand the Tiriti House model." As well as the request "When the Kāwanatanga Whare is doing their Tiriti House Model session, to please address GWRC's position in the Kāwanatanga House, to provide clarity and address the power structures." 	Kāwanatanga Whare committee members

CLOSED ACTIONS AND REQUESTS

Opened	Action	Update	Owner	Status
--------	--------	--------	-------	--------

Opened	Requests	Update	Owner	Status
10/05/23	the Kāwanatanga Whare Committee members speak to the other 3 Pākehā principles in TMoTW, including their take on what those concepts mean. Requested from: Mana Whenua Whare (item 2)	Completed at June 21 hui	Kāwanatanga Whare Committee members	Proposed Closure
10/05/2023	An in-depth session with Kathie, to understand the Tiriti House model. Requested from: Kāwanatanga Whare (item 6)	July note: <ul style="list-style-type: none"> Request now absorbed by action from July 19 hui 		Proposed Closure 09/08/23
10/05/23	When the Kāwanatanga Whare is doing their Tiriti House Model session, to please address GWRC's position in the Kāwanatanga House, to provide clarity and address the power structures. Requested from: Mana Whenua Whare (item 6)	July note: <ul style="list-style-type: none"> This request has been absorbed by action from July 19 hui 		

REQUESTS LOG/EDDY

Note that all requests said during the Committee meeting by either of the Whare will be captured in this request log/eddy. If it was not clearly stated or instructed to be captured as an action, it will stay here until it is officially confirmed as an action.

Opened	Request	Update	Owner	Status
10/05/2023 1	GWRC kaimahi to provide information on the science behind consent water allocation, and how a consent is approved or declined. Requested from: Kāwanatanga Whare (item 2)			
10/05/2023 2	GWRC kaimahi to provide information on the possibility of the Consents team to start putting consent clauses on all new water take consent conditions, to link back to the outcomes of this whaitua process. Requested from: Mana Whenua Whare (item 2)			

10/05/2023 3	<p>GWRC kaimahi to circulate to the Whaitua Kāpiti Committee the Whaitua Implementation 10-page report that was provided to their Environment Committee workshop in April.</p> <p>Requested from: Kāwanatanga Whare (item 7)</p>			
10/05/2023 4	<p>GWRC, KCDC kaimahi and the Kāwanatanga Whare Committee members to share their perspective on identifying FMUs, their rationale behind it, the process and approach.</p> <p>Requested from: Mana Whenua Whare (item 7)</p>			
21/06/23 5	<p>To have a mechanism clarified by which the two Whare can communicate between hui and to assist with reaching consensus if required.</p> <p>Requested from: Both Whare (item 2)</p>			
21/06/23 6	<p>To have a better understanding of how consents on the Kāpiti coast are limited at low flows. Firstly, highlighting the minimum flow limits for each of the Kāpiti water management units in the Whaitua and schedule R (of GWRC proposed Natural Resources Plan). Secondly, to look at example conditions on consents for the following:</p> <ol style="list-style-type: none"> 1. "Standard" low flow conditions on consents in the Kāpiti Whaitua (examples of takes from each of the management units for surface water, category A, and stream depleting category B). 2. Consents with non-standard low flow conditions, e.g. consents with a more restrictive low flow condition to mitigate effects <p>Request from: Mana Whenua Whare (item 3)</p>			
21/06/23 7	<p>The Kāwanatanga Whare to confirm the language they feel comfortable to use to identify the Crown/community system of knowledge and regulation; as well as the language to use for the non-Māori communities on the Kāpiti Coast.</p> <p>For example: Pākehā/Tangata Tiriti/Western/Tau iwi</p> <p>Request from: Mana Whenua Whare (item 3)</p>			

21/06/23	To have examples of previous WIP recommendations and the concrete provisions that came out of them in relation to specific decisions areas for this Committee.			
8	Request from: Mana Whenua Whare (item 4)			

DECISIONS LOG

Note that all decisions captured during the Committee meeting must be clearly stated as an action and providing instruction to minute taker to note down. If there is no clear instruction to capture a decision, it will be included in the requests log/eddy.

Opened	Decision	Update
05/04/23	Presentations to be shared in committee hui, are to be shared 1 week in advance, and slides are to be numbered.	
05/04/23	Minutes and agenda will be circulated in two weeks in advance of the next meeting.	
10/05/23	New people attending the Committee hui are to be introduced and welcomed, to establish relationships.	
10/05/23	Motion 1 – Accepting Mana Whenua Whare work programme.	
10/05/23	Motion 2 – the Kāwanatanga House representatives are retained for the second phase of the Whaitua Kāpiti process which will be resourced appropriately to recommend limits, action plans and other methods of the Whaitua Kāpiti process.	10/05/23 – The motion did not carry and was left open.
10/05/23	Motion 3 – Approval of the previous Whaitua Kāpiti Committee minutes from 5 April 2023.	
10/05/23	To recognise that decisions happening in the Tiriti House context, need to include Mana Whenua Whare. When there are decisions to be made for the process, they are going to be made at the Tiriti House.	
10/05/23	That anything brought to the Tiriti House must include the whakapapa (meaning the background and research about the idea) that comes with it.	
21/06/23	To the two outputs of the Whaitua Kāpiti. <ul style="list-style-type: none"> • A WIP recommendations document (1 plan) • An (RMA) Section 32 report (1 report) 	
21/06/23	To have a Kaupapa Māori model for report writing.	
21/06/23	To writing a joint report with two writers from each Whare.	
19/07/23	To consistently use the Terms of Reference language for describing the Mana Whenua House as such in the WIP.	
19/07/23	The Committee adopted the shared Te Mana o te Wai principles text as the final draft version (Box 1 in table of the WIP template). Waiata sung to mark the decision the Committee has made.	
19/07/23	To hold the Te Mana o te Wai expression text drafted at the 19 July hui, as internal work not to be shared externally until the end of the next meeting for further review and development by both Whare.	

Appendix

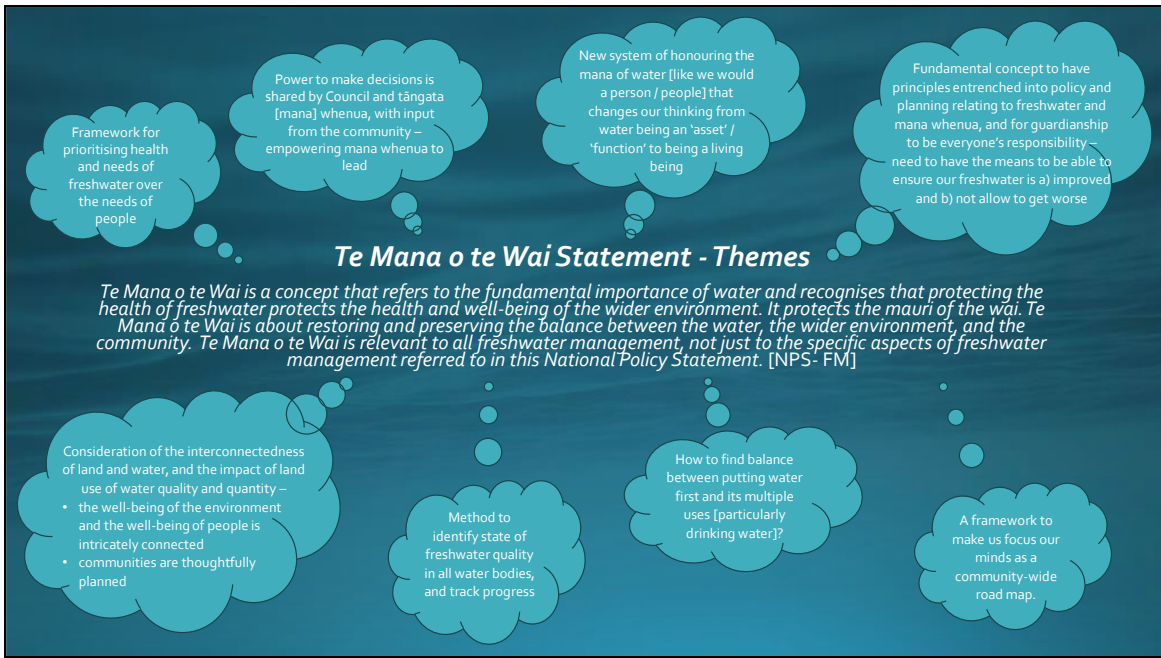
Appendix 1 – (Agenda item 3) Kāwanatanga Whare PowerPoint presentation on the further expression of TMotW and the 3 crown principles.....	12
Appendix 2 – (Agenda item 6) WIP template for the TMotW principle and plan objective statements.....	21

Appendix 1 – (Agenda item 3) Kāwanatanga Whare PowerPoint presentation on the further expression of TMotW and the 3 crown principles.

Slide 1



Slide 2



Slide 3



Slide 4

Governance - *the responsibility of those with authority for making decisions about freshwater to do so in a way that prioritises the health and well-being of freshwater now and into the future.*

- Central government creates the framework [hard lines] for all to be ruled by [NPS-FM]
- Appropriate authority is well-resourced, and roles between local / regional / central government understood - knowledge about Te Mana o te Wai and how it is best cared for is increased and shared
- Based on Te Tiriti house decision-making model, relationship and structure that is mutually mana-enhancing governance structure – based on principles of accountability, fairness, transparency, consensus, equitable
- How to achieve objectives that we decide – have line of sight
- Sets the framework and provides a clear and usable plan that delivers quality outcomes and ensures integrity with vision
- Success looks like: concept is entrenched into all planning processes – the community is aware of and supports the principles

Slide 5

Stewardship – *the obligations of all New Zealanders to manage freshwater in a way that ensures it sustains present and future generations.*

- Local government setting strategy, rules, monitoring, control and often delivering guidelines, and undertaking physical works
- Being good stewards for environment
- Balance needs of water and people – management practices and infrastructure improves neighbourhoods and ecosystems, and resilience to anticipated climate change impacts
- GW to implement WIP recommendations - ensures a framework is developed
- Success looks like: being proud of a 'product' [structure] and good freshwater quality and quantity

Slide 6

Care and Respect - *the responsibility of all New Zealanders to care for freshwater in providing for the health of the nation.*

- Our community, all people, circle back to hold all levels of government accountable
- Our actions recognise, restore, enhance, and protect the life of freshwater
- Care for freshwater and all those that live within the freshwater environment
- Communities are resilient and connected to their awa - rules and resourced action plans to require behaviours
 - connecting knowledge
- Elevate healthy watercourses as an overarching priority and fundamental change
- Let the water 'breathe' – water is given space to flow from the hills to the sea
- Data collection and education
- Success looks like – water quality is improved – everyone does their part to improve freshwater – our freshwater, rivers and lakes can breathe – our flora and fauna are thriving

Slide 7

Plan Objectives

– *develop and jointly adopt TMoTW Plan Objective(s) – must describe how management will give effect to it. Could include outcomes for the freshwater itself, how decision-making should occur, or how to enhance or restore relationships with freshwater, NPS-FM Sub-part 3.2.3.*

Objective [National Policy Statement for Freshwater Management 2020]

- 1) The objective of this National Policy Statement is to ensure that natural and physical resources are managed in a way that prioritises:
 - a) first, the health and well-being of water bodies and freshwater ecosystems
 - b) second, the health needs of people (such as drinking water)
 - c) third, the ability of people and communities to provide for their social, economic, and cultural well-being, now and in the future.

- Water is given space to flow from the hills to the sea - communities are thoughtfully planned, are protected from flooding to an agreed level of service, and resilient to anticipated climate change impacts - management practices and infrastructure improves neighbourhoods and ecosystems, and resilience to anticipated climate change impacts
- Integrated catchment management

Slide 8

Plan Objectives

- *develop and jointly adopt TMoTW Plan Objective(s)*

Have potential to set generic district-wide objectives, as well as specific objectives for individual FMUs – may need to revisit once line of sight is clearer;-

- Expressed outcomes from community survey
- Priorities water
- More riparian fencing and planting
- Strengthening community connection to all water bodies
- Improve water quality
- Cross pollution
- Improve fish passage
- Less in-stream works by Council
- Small FMUs
- Understand and enhance interconnectivity between groundwater, wetland and surface water
- Improve 'bad' and improve / maintain good waterways
- Water is given space to flow from the hills to the sea - communities are thoughtfully planned, are protected from flooding to an agreed level of service, and resilient to anticipated climate change impacts - management practices and infrastructure improves neighbourhoods and ecosystems, and resilience to anticipated climate change impacts
- Integrated catchment management from mountains to sea [irrespective of jurisdiction...]
- Measurable outcomes using both mātauranga māori and western science
- Indigenous biodiversity thrives and where finding balance doesn't compromise the environment

Slide 9

Freshwater Management Units

Considerations and understanding on appropriate FMU boundaries

General considerations -

- When deciding on FMU's the purpose is a critical consideration
- The key word to bear in mind is they are freshwater management units
- In this context "management" primarily means regional plan policies or rules
- FMU's have a large administrative burden and statutory implications – a pragmatic approach is required
- They are not the only tool in the toolbox – special or unique places may require a bespoke (non-regulatory) management approach and monitoring solution – this does not mean they need to be an FMU
- Recommended FMU boundaries are a first cut at this point – based on hydrological boundaries, similarities in land use and characteristics, and consequently the likely water quality. They will need to be firmed up after targets are set, and various contributing factors are considered (e.g. extent of the stormwater network), to ensure the FMU's are appropriate [line of sight]

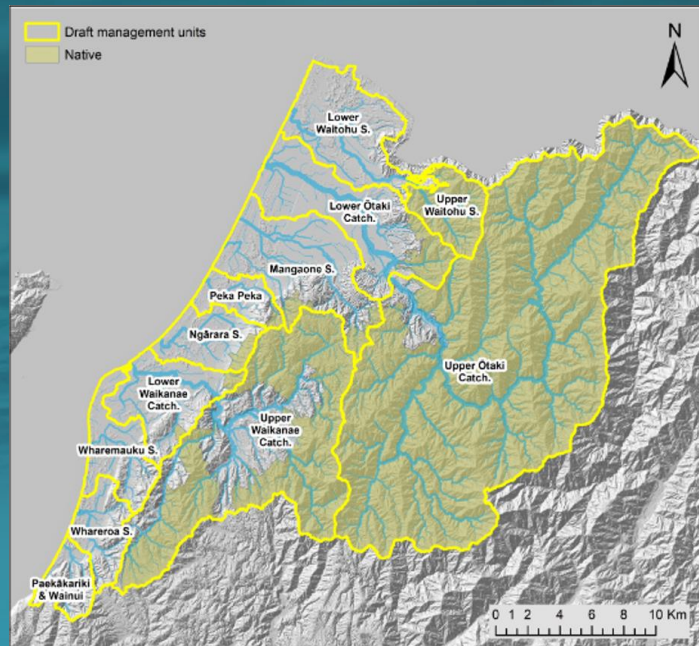
Slide 10

FMUs

Considerations and understanding on appropriate FMU boundaries

12 FMUs recommended, based primarily on:

- Hydrological boundaries
- Similarities in land use and characteristics
- Each FMU or Sub-FMU have the same reporting requirements (this is a big job) – the more
- FMUs, the more MFE reporting required



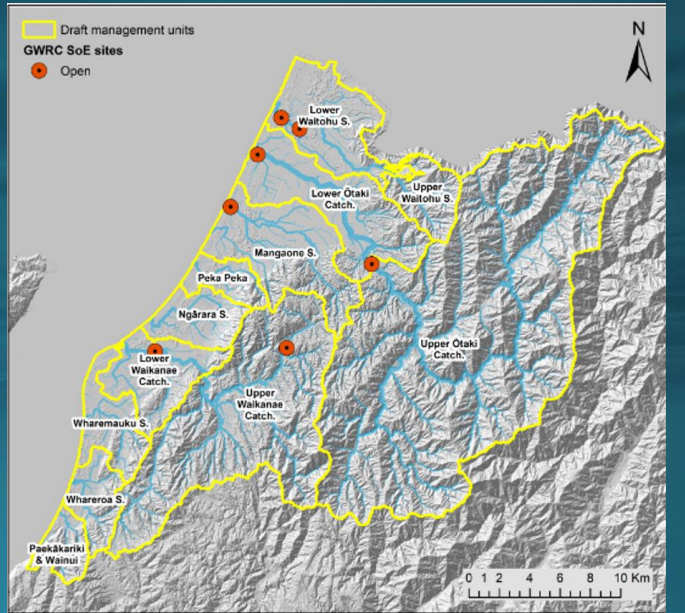
Slide 11

FMUs

Considerations and understanding on appropriate FMU boundaries

12 recommended FMU's shown with the current State of Environment monitoring sites overlaid – 6 out of 12 FMU's are represented

- Generally, want the site to be towards the bottom to capture the end impact of the management
- It is possible to give a small area that is important within an FMU (for whatever reason) special attention. E.g. programmes can be implemented to focus on improving a specific area.



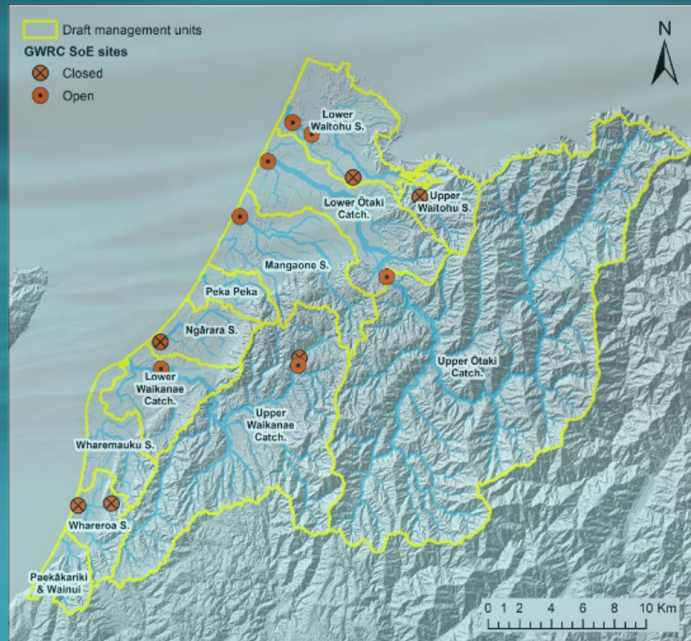
Slide 12

FMUs

Considerations and understanding on appropriate FMU boundaries

12 recommended FMU's shown with the current and retired State of Environment monitoring sites overlaid –

- 9 out of 12 FMU's are represented

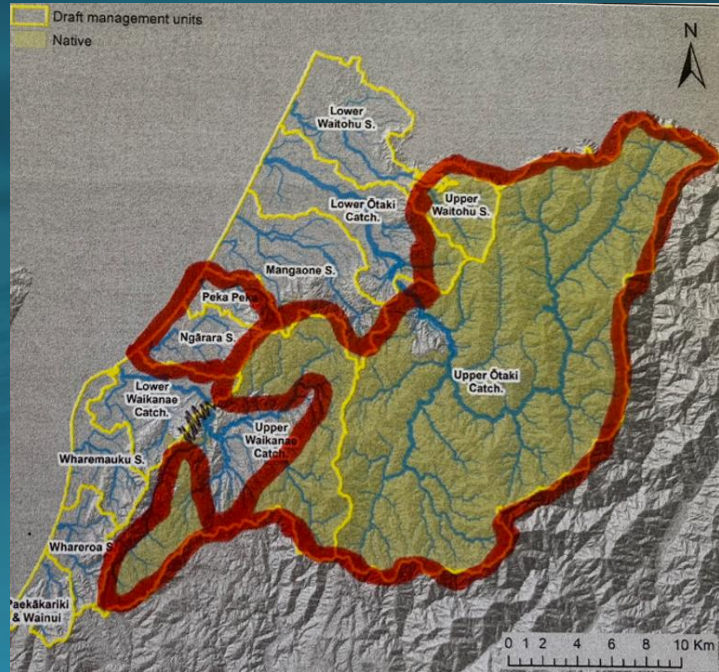


Slide 13

FMUs

Considerations and understanding on appropriate FMU boundaries

- 12 is possibly still a few too many –
could be further find into 9 by:
- Merging the 3 native forest dominated areas
 - Merging Peka Peka and Ngārara



Slide 14

Freshwater Management Units

Considerations and understanding on appropriate FMU boundaries

Concluding considerations -

- Natural catchment boundaries, including stormwater network catchments
- Collate catchments with similar characteristics – need for balance - too few and you lose the detail, too many and costs associated with the monitoring and audit requirements for each FMU becomes prohibitive
- Alignment with zoning maps and projected growth areas / plan changes [Ngārara / Peka Peka]?
- Interface between groundwater and wetland complexes
- Rohe boundaries
- Sea level rising

Appendix 2 – (Agenda item 6) WIP template for the TMoTW principle and plan objective statements

Principle statements
Te Mana o te Wai
<ul style="list-style-type: none">• The waterways in the Kāpiti Coast District are degraded. Many are now sick. TMotW must be restored• Honouring tmotw involves transforming the legacy of seeing water as just an asset, back to seeing healthy water as fundamental to the existence of all living things• There is a hierarchy of obligations in tmotw that prioritises;<ul style="list-style-type: none">- first the health and wellbeing of water bodies and freshwater ecosystems- second the health needs of people (such as drinking water)- third, the ability of people and communities to provide for their social, economic, and cultural well-being, now and in the future• Te Mana o te Wai has a whakapapa that connects the atua (natural processes) to the land and its people.• To appropriately understand and implement Te Mana o te Wai, Te Kotahitanga o Ātiawa, Ngāti Raukawa, and Ngāti Toa Rangatira, in partnership with Greater Wellington Regional Council and Kāpiti Coast District Council on behalf of the wider community, have adopted the 'Tiriti House Model'.• The 'Tiriti House Model', is a decision-making and implementation framework that gives effect to Te Tiriti o Waitangi and its articles. It is comprised of the MW and Kāwanatanga houses and a third Te Tiriti house where consensus decision making occurs.• Both houses are required to have some level of understanding of the tikanga and mātauranga, systems of regulation and knowledge, of each others' houses.• The Kāpiti Whaitua implementation programme will provide a road map for the whole community to give effect to tmotw.